

Important Locations for Attendees

The following maps highlight **essential locations** for the “Winter School on Contaminants of Emerging Concern (CECs) and Disinfection By-Products (DBPs): Occurrence, Impact and Elimination”, including the event venue, the location of the social events, routes, and points of interest around the area. Feel free to use these maps to help you navigate and make the most of your experience at Vila Nova de Gaia.

The first map (Figure 1) overviews our venue: the World of Wine (WOW). Some **points of interest at WOW** are marked by the blue circles, including museums and exhibitions. In addition, the locations of the **Nasoni Conference Room** and the **Angel’s Share Restaurant** (Lunches) are indicated by the pink circles. Two **alternative routes** from the WOW Main Square to the event venue can be seen on the map.

Please click on the following links to access live directions for both routes:

- [Route 1](#)
- [Route 2](#)

- 1 WOW Main Square
 - 2 The Wine Experience
 - 3 The Bridge Collection
 - 4 Wine School
 - 5 Cork Planet
 - 6 WOW Gallery
 - 7 Porto Region Across the Ages
 - 8 Parking Garage
 - A Nasoni Conference Room (2nd floor)
 - B Lunches – Angel’s Share (1st floor)
- From WOW Main Square to Event Venue
- Route 1
 - Route 2

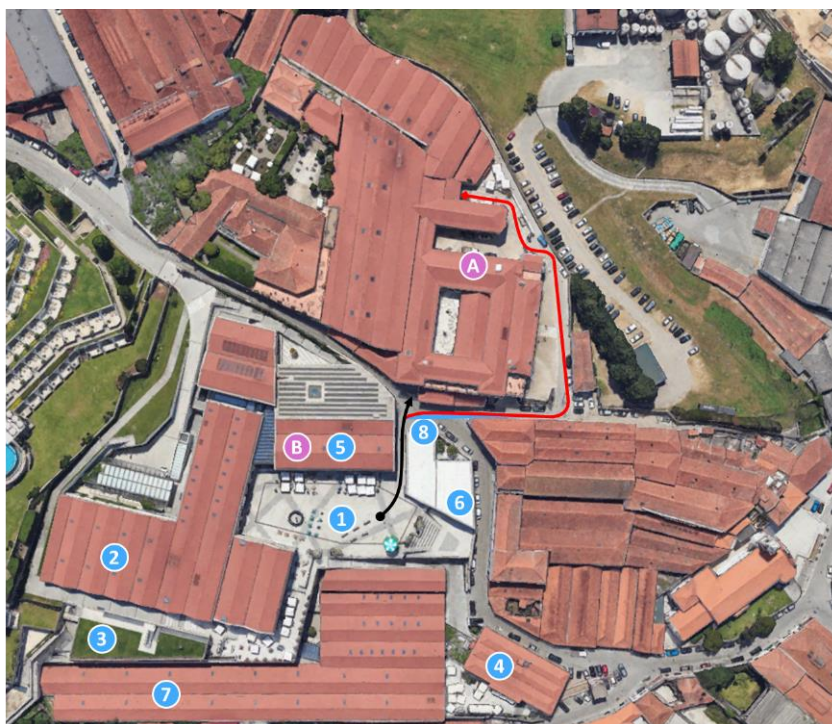


Figure 1. Alternative routes from WOW Main Square to the event venue (black and red lines), Winter School rooms (pink symbols) and points of interest at WOW (blue symbols).

The next map (Figure 2) shows two alternative routes to go from the **event venue** to the **Angel's Share Restaurant** (Lunches).

Please click on the following link to access live directions to Angel's Share from WOW Main Square:

- [Route WOW Main Square – Angel's Share](#)

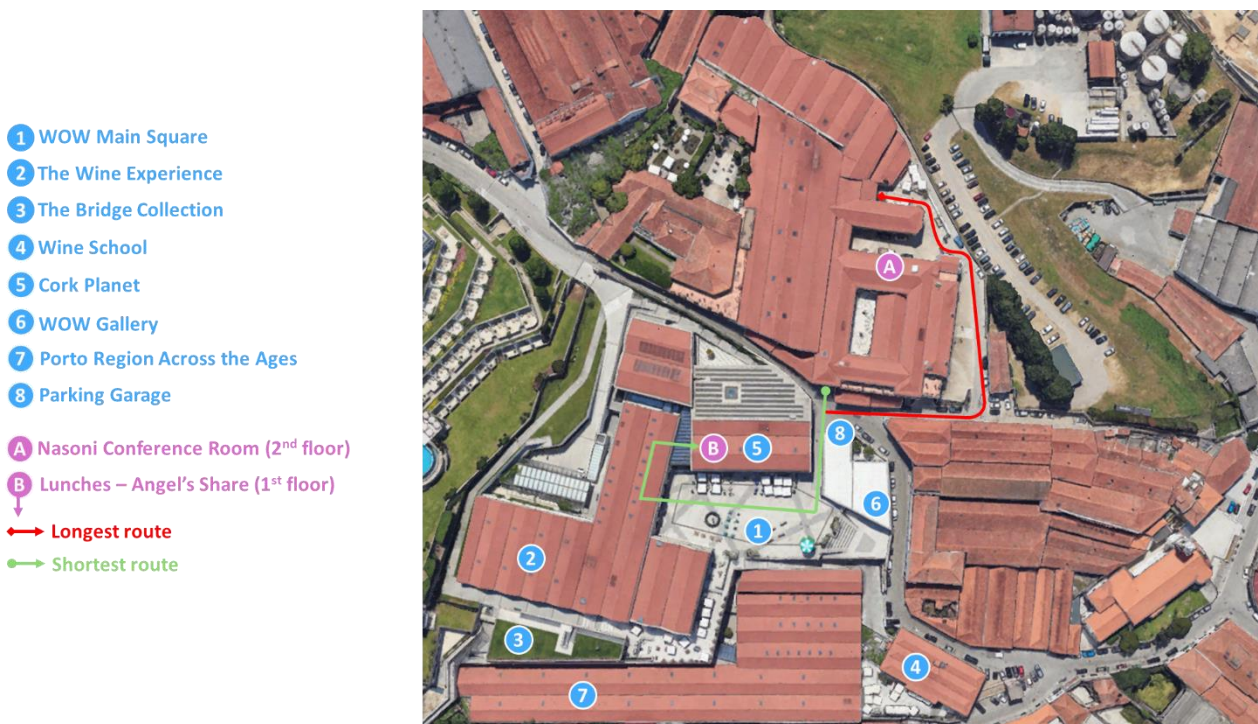


Figure 2. Alternative routes from event venue to Angel's Share (Lunches) (red and green lines).

The following map (Figure 3) overviews the Gaia Pier area. Here, you can find the location of **WOW** (event venue location), the **Ferreira Wine Cellars** (Social Event 3 on November 26th) and the **Sancho Panza Restaurant** (Social Event 4 on November 26th).



Figure 3. Location of two main social events that will occur around WOW.

This last map (Figure 4) provides a detailed **layout of the Winter School venue**, including the main conference halls, coffee break location, and registration area.

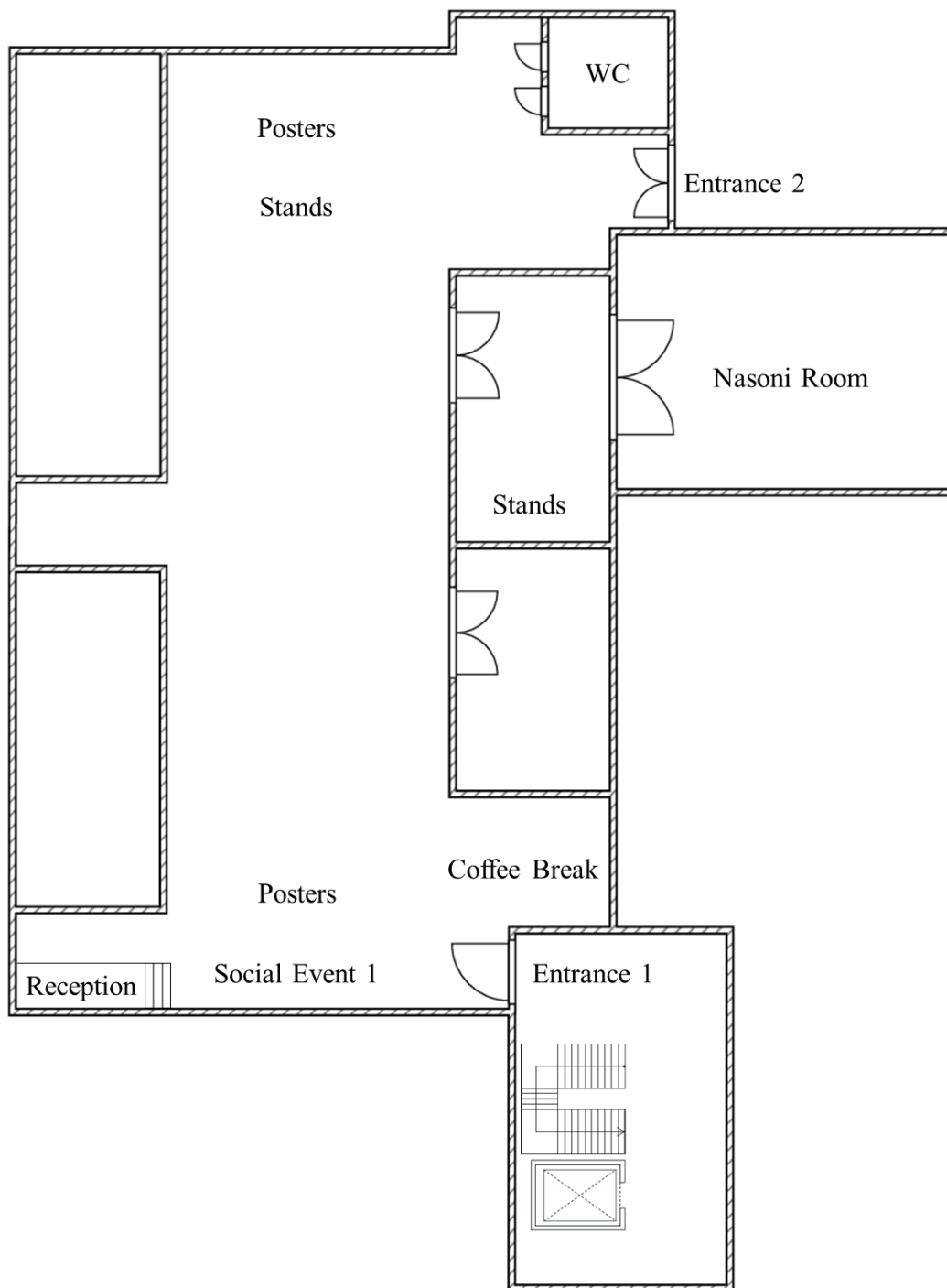


Figure 4. Layout of the Winter School venue.